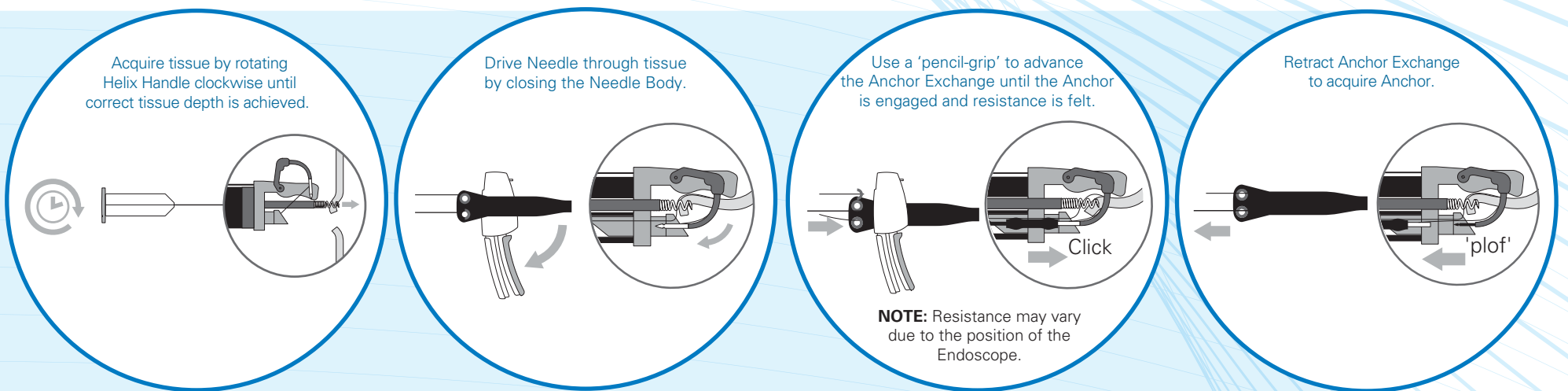


# OverStitch™ Endoscopic Suturing System

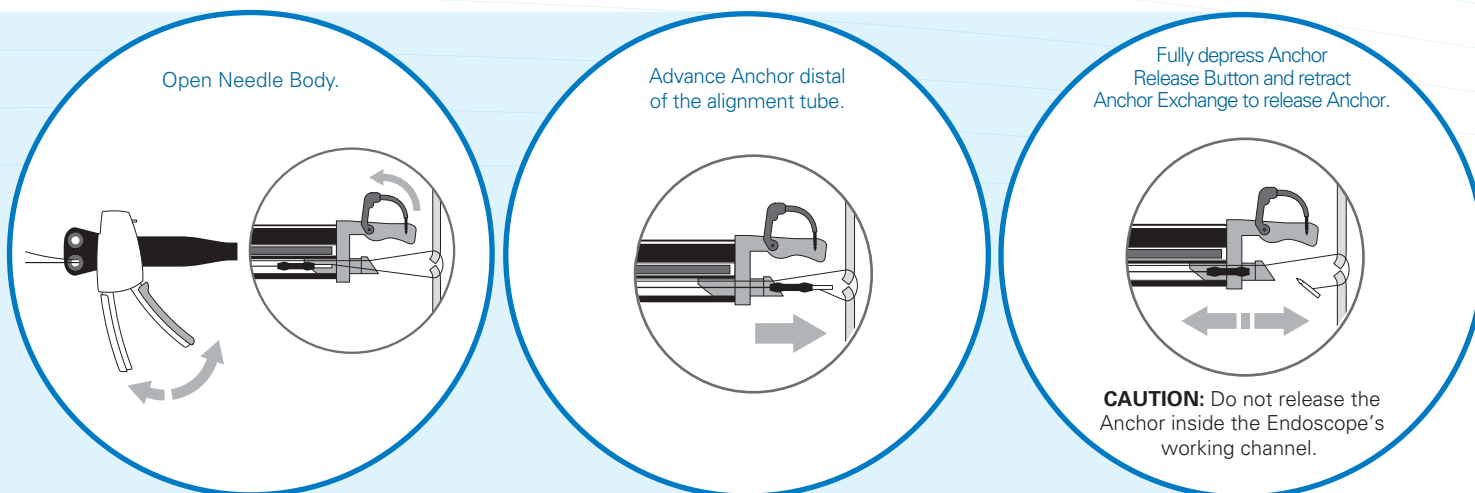
## Suturing Quick Reference

### Suture Tissue

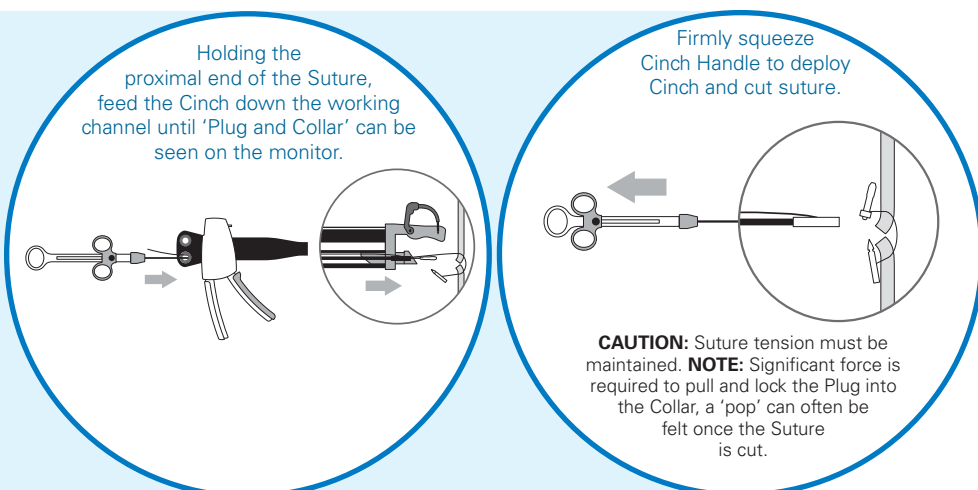


**NOTE:** To place a running stitch, transfer anchor back to needle body and repeat.

### Drop Anchor



### Cinch



Defining the Future  
of Endoscopic Surgery™

[www.apolloendo.com](http://www.apolloendo.com)   